

Woodpecker CNC User Manual

https://drive.google.com/file/d/0B_D5Q22i_vHpVm1VYTd4am02WWs/view?usp=sharing

1. Assembly

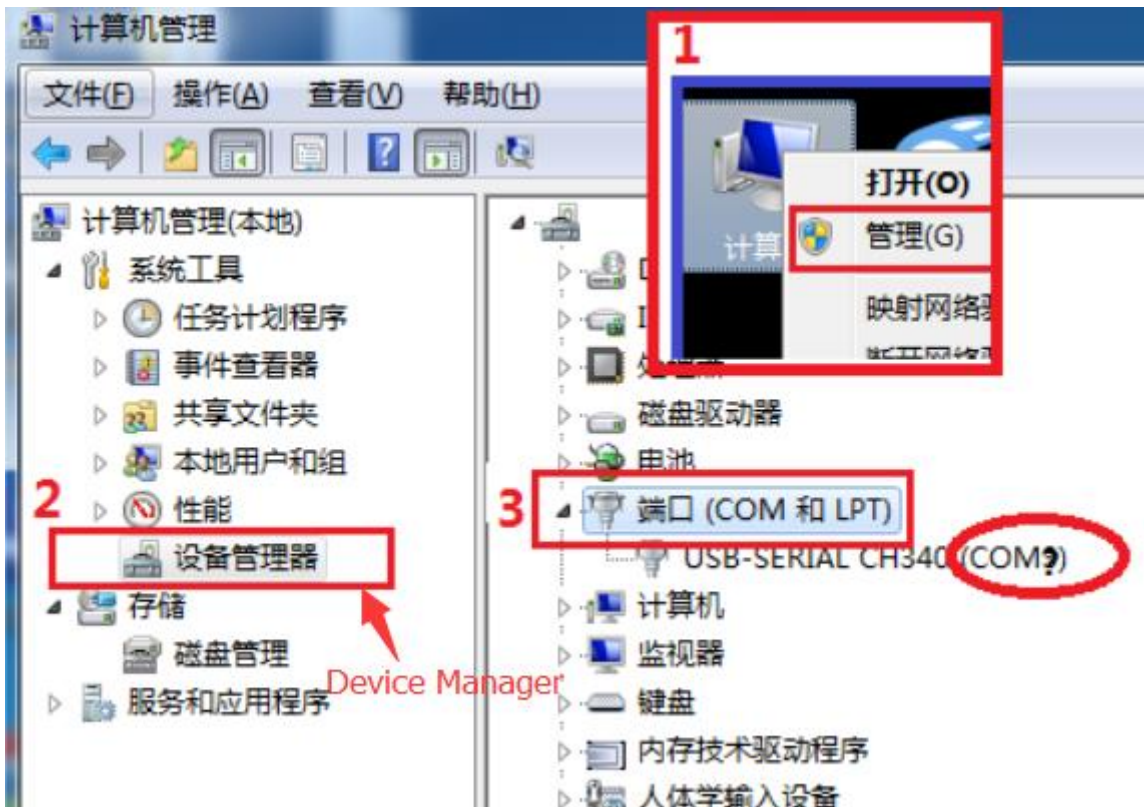
Please refer to 《Assembly instructions》 to assemble the machine。

2. Debugging

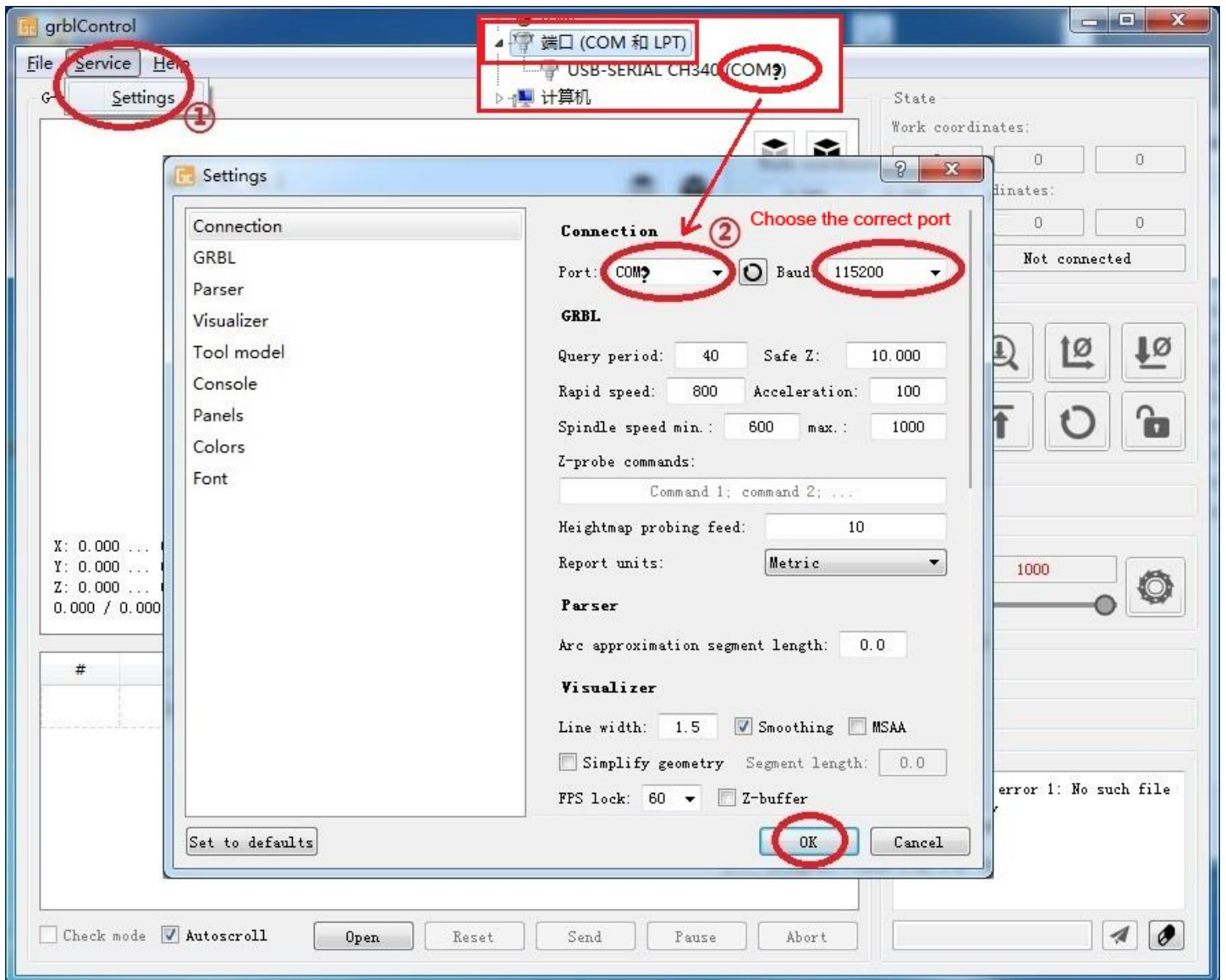
- Install the driver CH340SER.



How to find the correct COM port of the usb

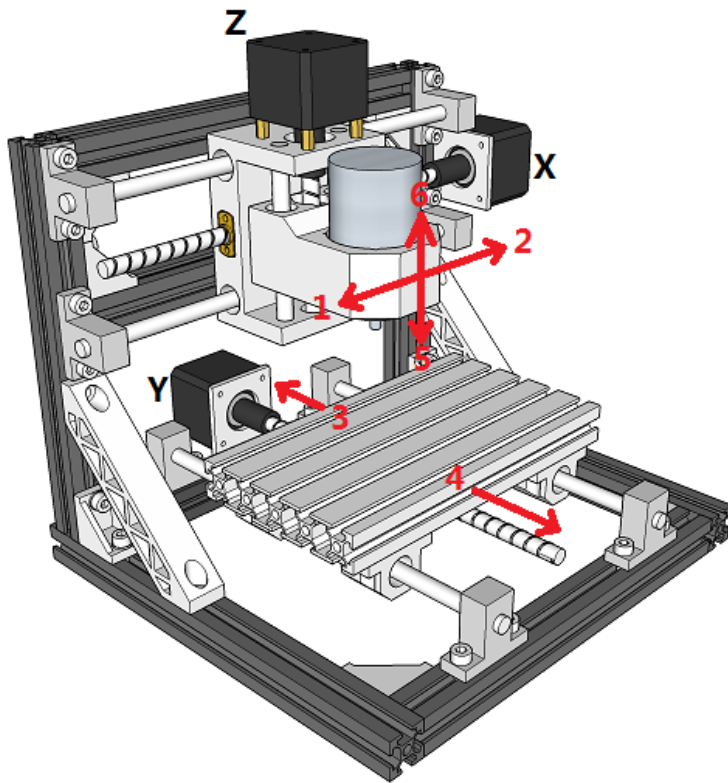


- Open grblControl software to connect the machine, choose the correct port:



Connection succeeded: [CTRL+X] < Grbl 0.9j ['\$' for help] ,

Check direction of XYZ axis:



If the x,y,z axis do not move like the number shows, just connect the step motor wire in the reverse direction

How to alignment drill bit `s position

#	Command	State	Response
1	G90	In queue	
2	G1Z3F200	In queue	
3	M03 S1000	In queue	
4	G0 X2.4349 Y10.0865	In queue	